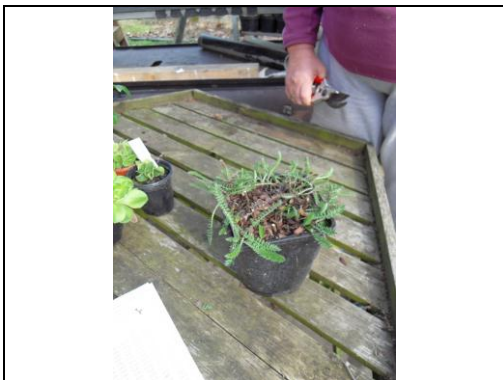




Firstly we type up your order, and then collect all your plants together. We find the 'best' plant of each as if you were picking them yourself.



Sometimes we have to cut plants down to fit them into the box. Here the Achillea has last year's growth still in the pot. So it is cut off. We try, where possible, to keep plants at their full height, so if it's flowering and 60cm tall when you want it, we will endeavour to pack it 'intact'. There are times, however when we have to cut things down, but we often do it sympathetically, and include what flowers we have cut so you know what you're getting



As you can see, the Achillea has not suffered from being cut down, and there is plenty of new growth.



We have a large selection of different sized boxes. Some are ones we have received deliveries in; others are donated by the local village shop (who we in turn donate plastic bags to), the local farm and other local businesses.



Once a box is chosen the packing begins.



But as you can see here, the box chosen isn't big enough. Which is why having a large selection to choose from makes it easier, otherwise boxes have to be 'created' from several taped together.



So another, larger box is found.



Although it is almost big enough, there are still 4 plants left.



The packing continues with shredded paper. We luckily have friends who keep us supplied, as well as shredding our own paper. At certain times of the year we run out, but have some emergency suppliers.



The extra 4 plants are put into a smaller box



Which is packed in the same way as the larger box



Due to the size of the main box, the smaller one can fit inside.





The remaining space is filled up with shredded paper.



The box is finally full and closed.



We tie the parcel using strapping.



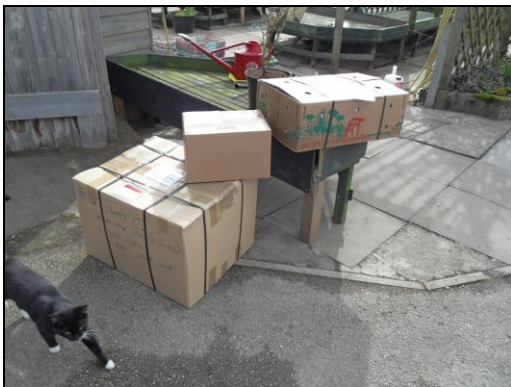
All strapped up, there is little chance of the strapping 'slipping' off or being ripped.



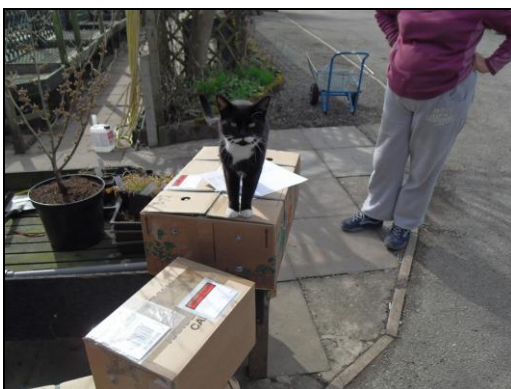
Your card is then charged, and the invoice is then finalised.



It is then attached to your parcel.



The parcel, and any others to be sent out that day, are ready for the courier to collect.



After one final inspection that is!